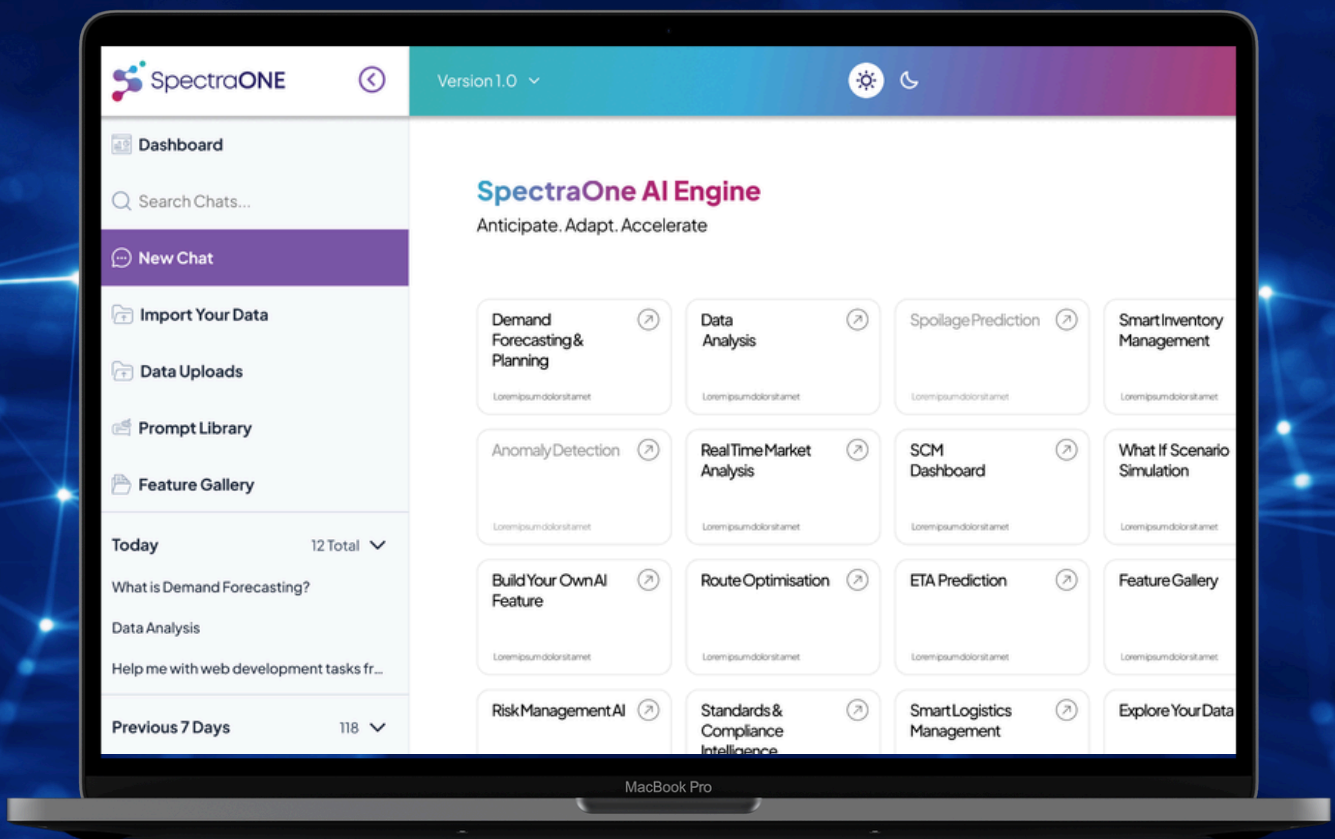


The 14-Day KPI Challenge

Test Real Impact on One Supply Chain KPI

Without Changing Your Systems

Retail | Food & Beverage | Logistics & 3PL



SpectraONE

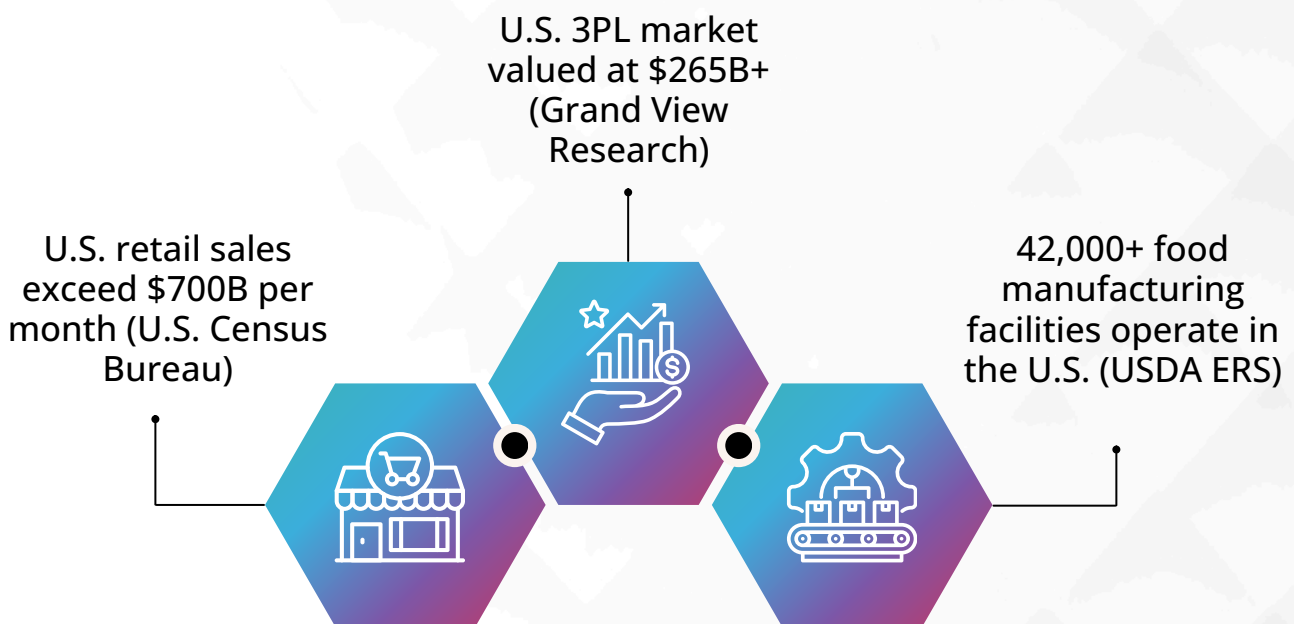
Built by Supply Chain Experts. Powered by Advanced AI.

Prove what real-time signal intelligence can do in just 14 days.

What Changed In The Last 5 Years

Supply Chains Are Moving Faster Than Planning Cycles

— Across North America —



But the real change isn't size. It is speed.



Promotions move faster



Demand swings are sharper



Transportation volatility is higher



Compliance requirements are stricter



Working capital pressures are increasing

Most planning systems were built for stable demand patterns.
Today's environment is not stable.

The Common Pain

Different industries, but same frustration.



Retail teams say

"Inventory looks fine on paper, but stores tell a different story."



F&B teams say

"We don't see the mismatch until production is already done."



3PL teams say

"We find out service risk when the customer calls."

This is not a system failure; it is a **signal timing issue**.
You are identifying the problem, but not early enough.

What The 14-Day KPI Challenge Is

Not a replacement project OR an IT overhaul OR a risky experiment.

It's a focused operational test.

You choose one KPI:

Forecast accuracy

ETA variance

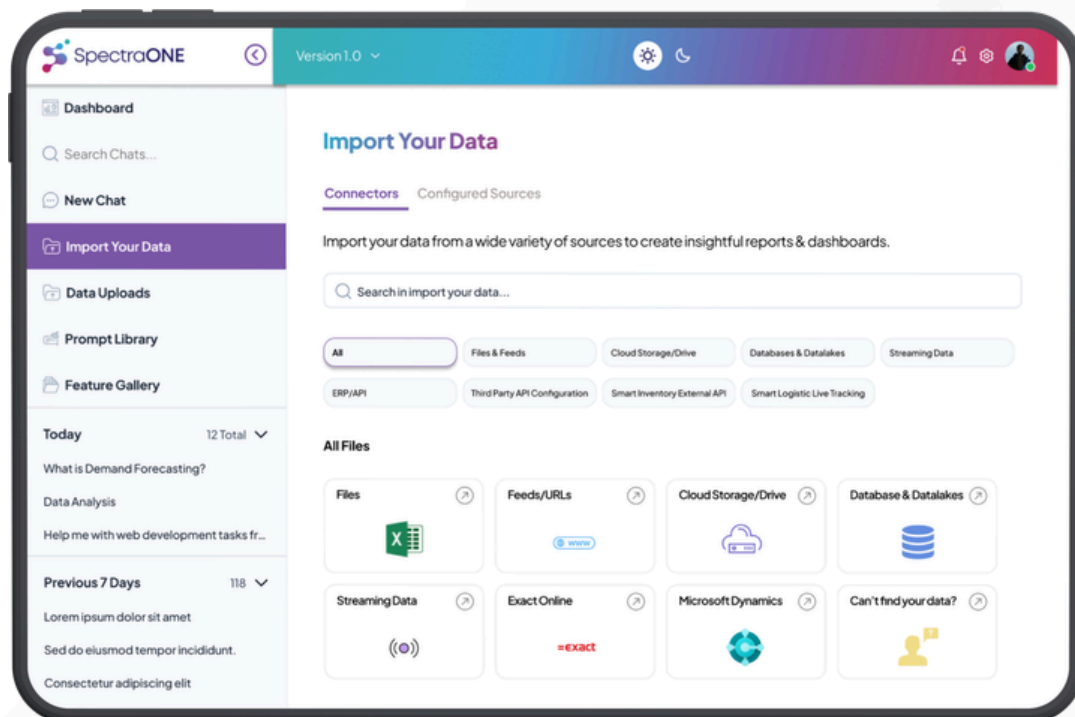
Waste %

Inventory turns

Stockout rate

Service reliability

We run a structured 14-day analysis using your existing data.



No integration is required, so your workflows remain uninterrupted.

You measure the clarity.
Then you **decide**.

Retail: A Practical Example

Scenario: A promotion launches across multiple locations.

What usually happens



Demand spikes unevenly



Some stores overperform



Others underperform



Inventory shifts too late



Safety stock increases next cycle

This results in margin pressure and reactive inventory redistribution.

With earlier signal visibility



Node-level drift appears sooner

Imbalances are visible before they widen

Redistribution can happen proactively

The difference is not additional data.

It's an earlier insight.

Food & Beverage: A Real-World Scenario

Short shelf life | Daily production | Tight margins.

What usually happens:

The forecast looks stable.

Actual demand shifts slightly.

By the time it's visible, the product is already produced.



Then:

- Waste increases
- Shrink rises
- Adjustments happen tomorrow instead of today

With signal intelligence:

- Drift appears mid-cycle
- Shelf-life exposure is visible sooner
- Production adjustments are possible before the overrun

This isn't about replacing your planning team.

It's about giving them an earlier warning.

Logistics & 3PL: Service Reliability Under Pressure

You don't LOSE CONTRACTS because of PRICE, you lose them because of unpredictability.



With signal detection



Variance trends are visible before SLA breach

Planning teams act before customers escalate

Route clusters show early instability

This is operational control.

How SpectraOne Works

You already have:

ERP

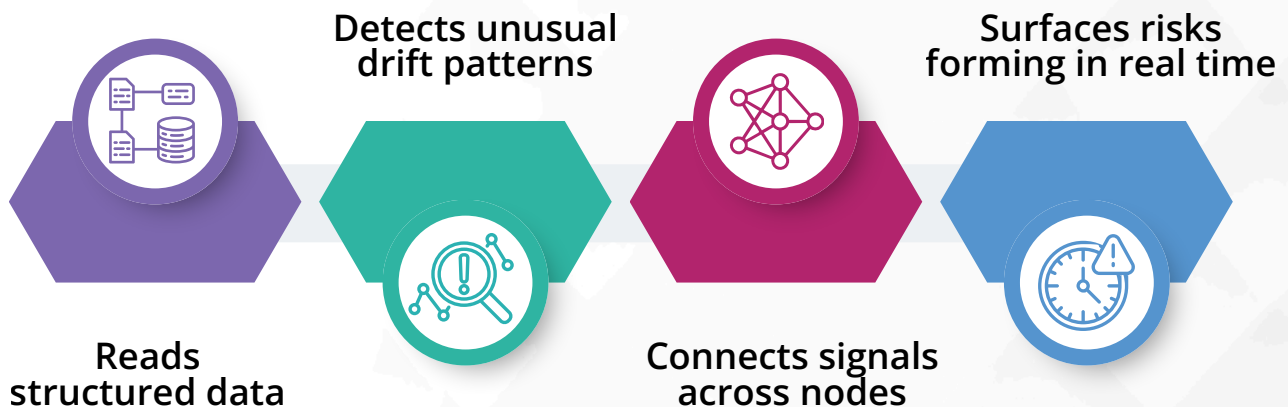
Forecasting tools

TMS

Dashboards

WMS

SpectraONE operates as a signal layer above these systems.



Behind the scenes, we use:

- Advanced transformer-based models
- Contextual reasoning engines
- Pre-modeled insight layers

You do not need to understand the underlying algorithms.

You just need to see whether earlier signals change your decisions.

If your technical team wants more detailed architecture information

Our product team will HELP YOU.

What You Get In 14 Days

DAY 1-2

Baseline
review of your
selected KPI

DAY 3-5

Signal drift
and leak
identification

DAY 6-8

Validation
session with your
operations team

DAY 9-11

Targeted insight
walkthrough

DAY 12-14

KPI clarity
report + decision
roadmap



Only 4-5 hours of your total time commitment across two weeks.

No disruption | No system change.

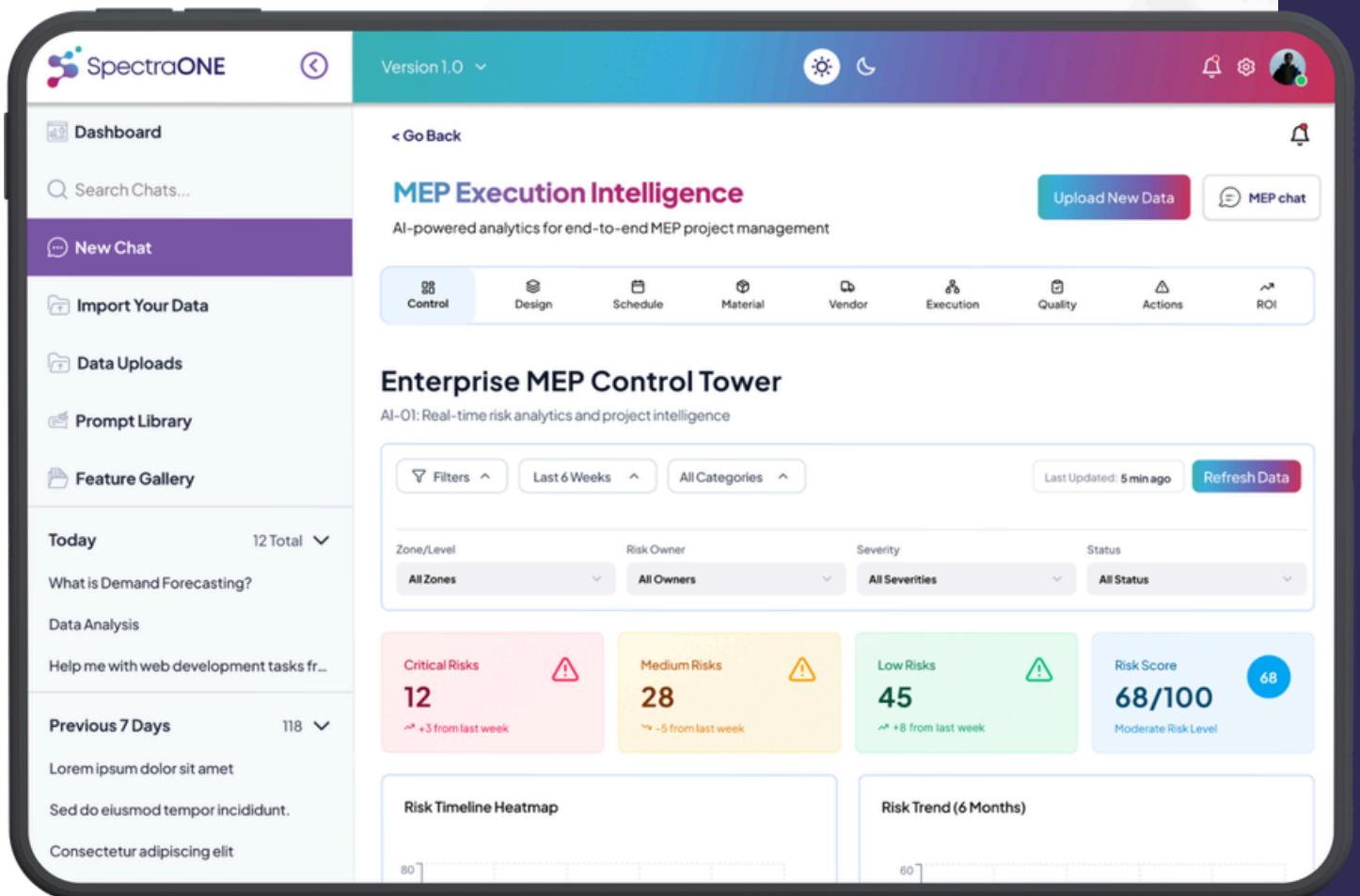
Why This Is Low Risk

We start with structured exports.

No integration is necessary.

No changes to your infrastructure are required.

No rip-and-replace approach is involved.



You simply assess whether earlier signal visibility improves clarity.

- If it does not, you will still gain valuable insights.
- If it does, we proceed with a careful scale-up.

Who We Are

SpectraONE was launched in under 6 months by:

- Senior supply chain practitioners
- AI engineers with enterprise experience
- A blended team of industry veterans + next-gen technologists



Backed by _____

Paramount Software Solutions

25+ year technology company with deep enterprise delivery experience.

This isn't experimental AI. It's purpose-built operational intelligence.

**We believe: If impact isn't measurable in weeks,
it shouldn't be scaled.**

Choose One KPI. Test It for 14 Days. See the Difference Yourself.

Retail | Food & Beverage | Logistics & 3PL

SpectraONE, Real-Time Signal Intelligence
Built for **Modern Supply Chains**

For **operational clarity**, start with the KPI challenge.



If you want a technical deep dive?

Our product team will walk you through in detail.

Architecture | security | AI models